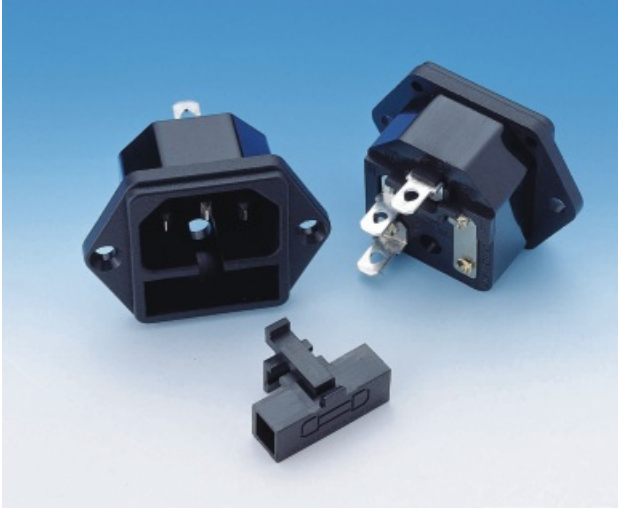




榮豐工業股份有限公司
RONG FENG INDUSTRIAL CO.,LTD.

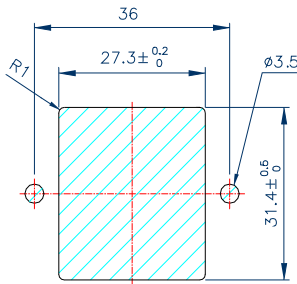
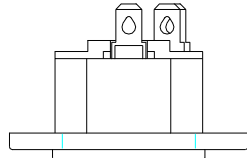
180 ChengKung 3rd. Rd., Nantou City, Taiwan 540
Tel :886-49-2252421/5
Fax:886-49-2253647
http://rongfeng.com.tw
e-mail:rongfeng@tcts.seed.net.tw

POWER INLET 5x20MM FUSE HOLDER

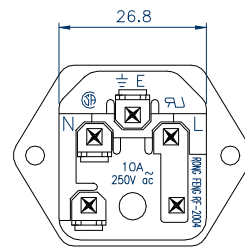
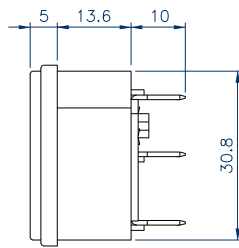
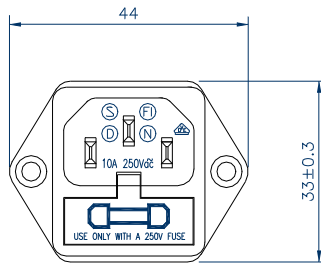


RF-2004-C

STANDARD:IEC 320-1 C14
STANDARD:IEC 320-1 C14
RATING :10A250V AC
APPROVALS:UL/CSA/VDE/DEMKO/
NEMKO/SEMKO/FIMKO



PANEL CUTOUT DIMENSION TABLE



RF-2004-C-	6.3	
	6.3	
	4.8	
	4.0	
	2.8	