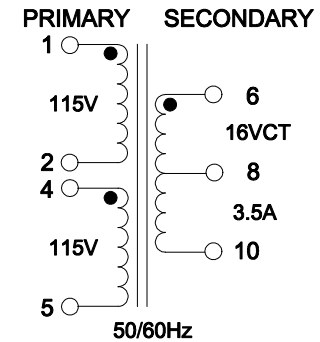
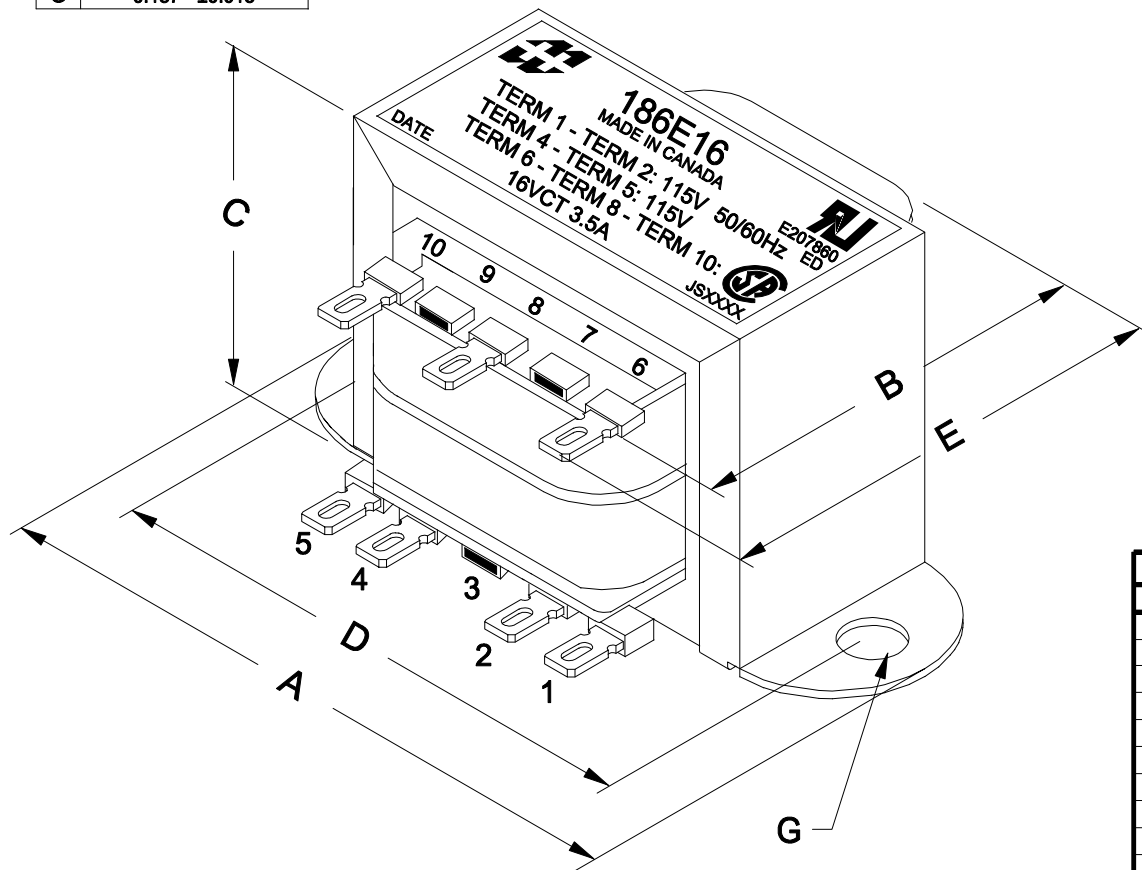


DIMENSIONS:	
A	3.688" ±0.063
B	1.850" ±0.125
C	2.308" ±0.063
D	3.125" ±0.063
E	2.209" ±0.063
G	0.187" ±0.015



FOR 230V:  
CONNECT PIN 2 & PIN 4 TOGETHER  
INPUT VOLTAGE ON PIN 1 TO PIN 5

FOR 115V:  
CONNECT PIN 1 & PIN 4 TOGETHER  
CONNECT PIN 2 & PIN 5 TOGETHER  
INPUT VOLTAGE ON PIN 1 TO PIN 2

ELECTRICAL DATA:		
TESTS	CONDITIONS	ACCEPTANCE CRITERIA
Iex	@ 115V, 60Hz, TERM 1 - TERM 2	127.2mA Max.
Sec. N.L.V	@ 115V, 60Hz, TERM 1 - TERM 2	
	TERM 4 - TERM 5 =	115.0V ±2%
	TERM 6 - TERM 10 =	18.15V ±2%
	TERM 6 - TERM 8 = TERM 8 - TERM 10 =	9.073V ±2%
DCR	@ 20°C, TERM 1 - TERM 2 =	17.12 Ω ±20%
	@ 20°C, TERM 4 - TERM 5 =	20.50 Ω ±20%
	@ 20°C, TERM 6 - TERM 10 =	0.227 Ω ±20%
HIPOT	PRIMARY - SECONDARY	2500V, 60Hz, 1 SEC

REV.#	REVISION	DATE	HAMMOND ELECTRONIC DIVISION		PH # (519) 886-6181 FAX # (519) 886-9540
0	RELEASED. C.I.	06/07/18	MANUFACTURING™		
			DWG. BY: C. ILIE	CHK'D BY:	TITLE: POWER TRANSFORMER
			DATE: 06/07/18	APP'D. BY:	
				DIMENSIONS: IN(X) MM ( )	DWG. NO. 186E16